



PETROTECH ENGINEERS

WELD PAD LEVEL GAUGE



CONTACT: PETROTECH ENGINEERS

Web- www.Petrotechengineers.com

Email- info@petrotechengineers.com

WELD PAD LEVEL GAUGE

TECHNICAL SPECIFICATION

MODEL PERW-120

120 KG/CM² @ 37 °C/1700 PSI @ 100 °F

DESCRIPTION:

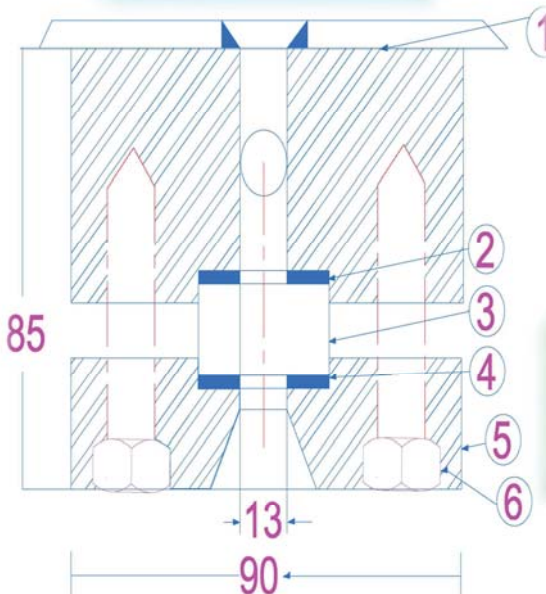
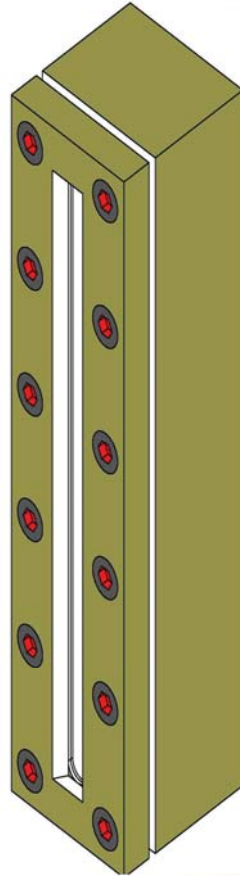
Series **PERW-120** is designed to be welded directly to a vessel or other liquid containing vessels. The body lengths and visibility are the same as standard gauges in single or multiple types. These gauges consist of a pad which is machined from bar stock, standard forged covers, glass, gaskets and bolts.

FEATURES:

Liquid Chamber: One piece Carbon steel or stainless steel, Regardless of number of gauges Sections. Standard and optional Materials CS, ASTM A 105, SS 304, SS 316L, Monel, Titanium, Inconel 600, Hystalloxy conform with or exceed Requirements of AISI, ASTM and API-ASME for recommended pressures. **Covers:** Encloses glass to reduce stress and resist glass breakage.

Bolts and Nuts: Alloy steel standard B7 & 2H, B8 & 8M. **Glasses:** Toughened Borosilicate Size 115, 140,165,190,220,250,280,320,340 for high strength and resistance to thermal shock.

Gaskets and cushions: IFG 5500, CAF, PTFE, Graphoil SS316 reinforced, Graphoil SS304 reinforced type die cut from quality material providing a long life.



STANDARD DIMENSIONS

SECTIONS	MODEL	GLASS SIZE	VISIBLE LENGTH (MM)	OVERALL LENGTH(MM)
1	11-PERW-120	1	93	133
1	12-PERW-120	2	118	159
1	13-PERW-120	3	143	184
1	14-PERW-120	4	168	210
1	15-PERW-120	5	198	238
1	16-PERW-120	6	228	270
1	17-PERW-120	7	258	298
1	18-PERW-120	8	298	340
1	19-PERW-120	9	318	359
2	24-PERW-120	4	375	419
2	25-PERW-120	5	435	476
2	26-PERW-120	6	495	540
2	27-PERW-120	7	555	597
2	28-PERW-120	8	635	697
2	29-PERW-120	9	675	718
3	36-PERW-120	6	762	810
3	37-PERW-120	7	852	895
3	38-PERW-120	8	972	1019
3	39-PERW-120	9	1032	1076
4	47-PERW-120	7	1149	1194
4	48-PERW-120	8	1309	1359
4	49-PERW-120	9	1389	1435
5	57-PERW-120	7	1454	1492
5	58-PERW-120	8	1646	1699
5	59-PERW-120	9	1746	1794

Temp (°F)	Maximum Pressure (psi)								
	PERW-120 Reflex Gauge								
	Glass Size								
	1	2	3	4	5	6	7	8	9
100	1990	1785	1645	1539	1395	1254	1160	856	800
200	1870	1695	1573	1400	1300	1187	1000	835	760
300	1600	1430	1376	1200	1110	1000	840	790	600

SR.NO	DESCRIPTION	MATERIAL
1	CHAMBER	CS, ASTM A 105, SS 304, SS 316L
2	GASKET	IFG 5500, CAF, PTFE, Graphoil SS316 reinforced, Graphoil SS304
3	GLASS	Toughened Borosilicate Size 115, 140,165,190,220,250,280,320,340
4	CUSHION	IFG 5500, CAF, PTFE, Graphoil SS316 reinforced, Graphoil SS304
5	COVER	CS, ASTM A 105, SS 304, SS 316L
6	BOLT	CS or SS304 or A 193 Gr. B7, CS or SS304 or A 193 Gr. 2H



Petrotech Engineers

Office: 485-486/A-3

Makarpura GIDC

Vadodara – 390010.Gujarat. India

Website: www.petrotechengineers.com

Email : info@petrotechengineers.com